



# Current and Future developments

Tomas Rydberg, IVL



# ProScale



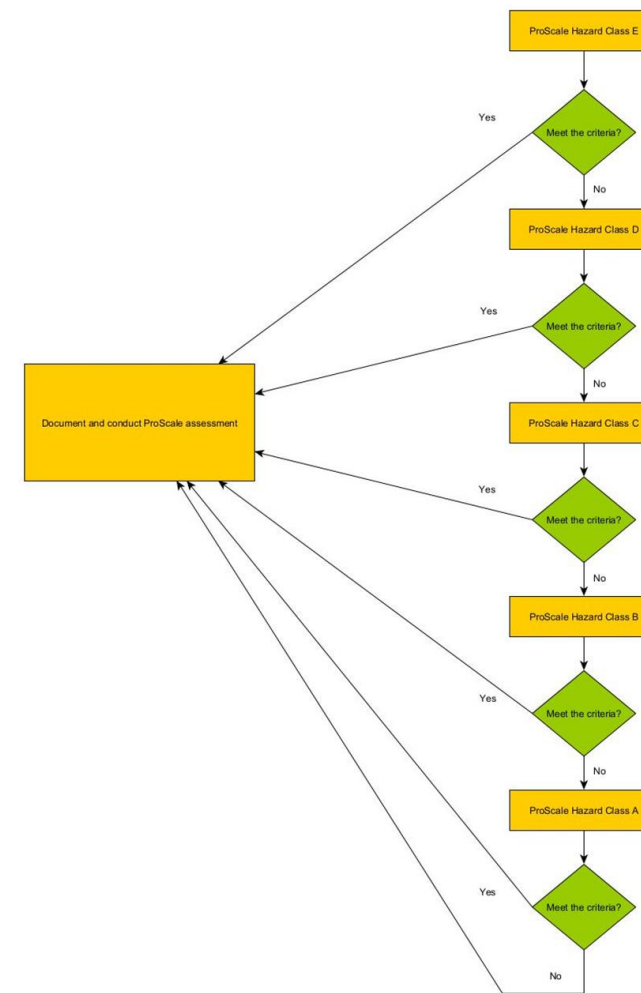
# Main themes

---

- Finalise guidance how to derive preliminary H-factors
- Development and consolidation of ProScale-E (ecotoxicity)
- Integration of ProScale in regular LCA software

# Preliminary H-factors

- Work ongoing within Mistra SafeChem
- Requires advanced computational methods
- Is intended to produce indicative classification suggestions to facilitate derivation of ProScale scores
  - Step 1: guidance what to use among available “QSAR-type” tools
  - Step 2: make use of new models
  - May later on be in-built in the web-tool



# ProScale-E

---

Why not use only DNEL/OEL

- Similar philosophy as current ProScale
  - H-phrases combined with DNEL/OEL
- May include an in-built emission/env exposure model



# Integration of ProScale in regular LCA software

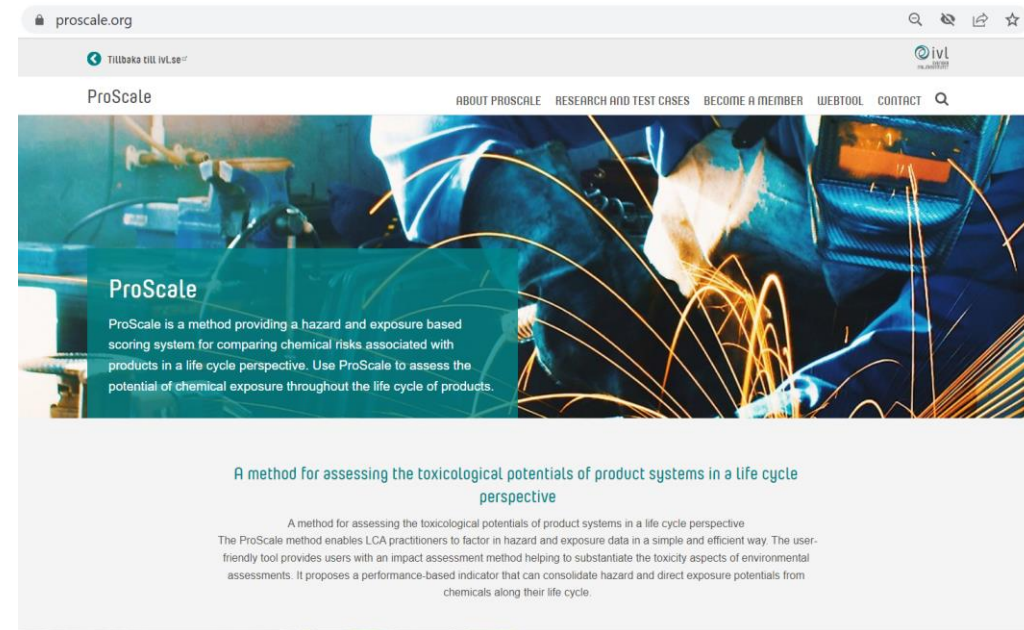
---

- Discussions organized with
  - GaBi (LCA expert Tool)/Sphera
  - SimaPro/Pré consultants
  - OpenLCA/GreenDelta
- Small example developed in GaBi



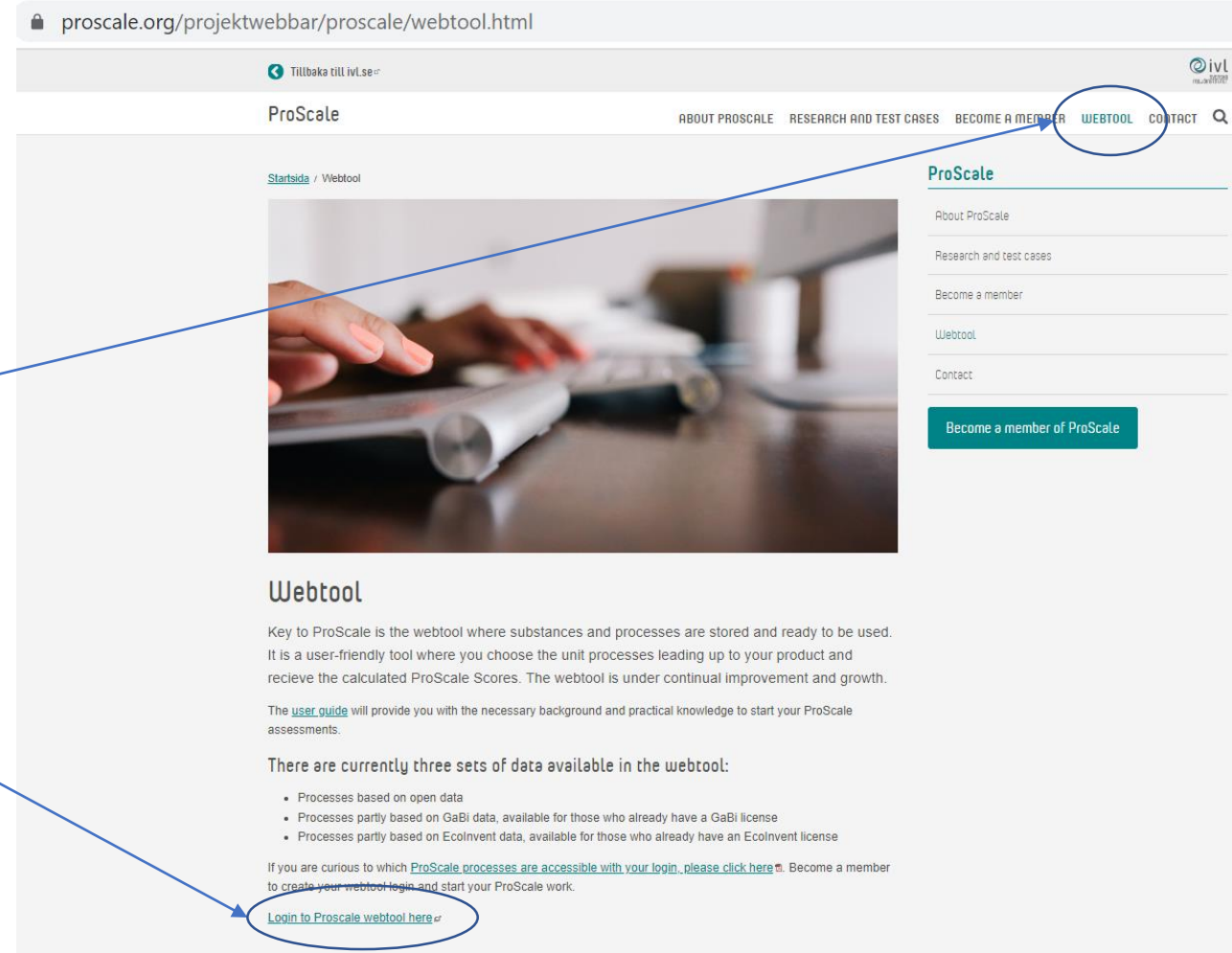
# How can you engage?

- ProScale website
- <https://proscale.org/>



# Web-tool

- Find your way through the meny
- Continue to the tool
- Contact us for further guidance



The screenshot shows the ProScale website at the URL [proscale.org/projektwebbar/proscale/webtool.html](https://proscale.org/projektwebbar/proscale/webtool.html). The browser's address bar and navigation bar are visible. The navigation bar includes links for "ABOUT PROSCALE", "RESEARCH AND TEST CASES", "BECOME A MEMBER", "WEBTOOL", and "CONTACT". The "WEBTOOL" link is circled in blue. Below the navigation bar, the main content area features a large image of hands using a tablet. To the right, a sidebar menu lists "About ProScale", "Research and test cases", "Become a member", "Webtool", and "Contact". A teal button labeled "Become a member of ProScale" is positioned below the sidebar. The main content area has a heading "Webtool" and a paragraph describing the tool's purpose. Below this, there is a list of data sets available in the webtool. At the bottom of the page, a link "Login to Proscale webtool here" is circled in blue.

proscale.org/projektwebbar/proscale/webtool.html

Tillbaka till ivl.se

ProScale

ABOUT PROSCALE RESEARCH AND TEST CASES BECOME A MEMBER WEBTOOL CONTACT

Startsida / Webtool

ProScale

About ProScale

Research and test cases

Become a member

Webtool

Contact

Become a member of ProScale

## Webtool

Key to ProScale is the webtool where substances and processes are stored and ready to be used. It is a user-friendly tool where you choose the unit processes leading up to your product and receive the calculated ProScale Scores. The webtool is under continual improvement and growth.

The [user guide](#) will provide you with the necessary background and practical knowledge to start your ProScale assessments.

There are currently three sets of data available in the webtool:

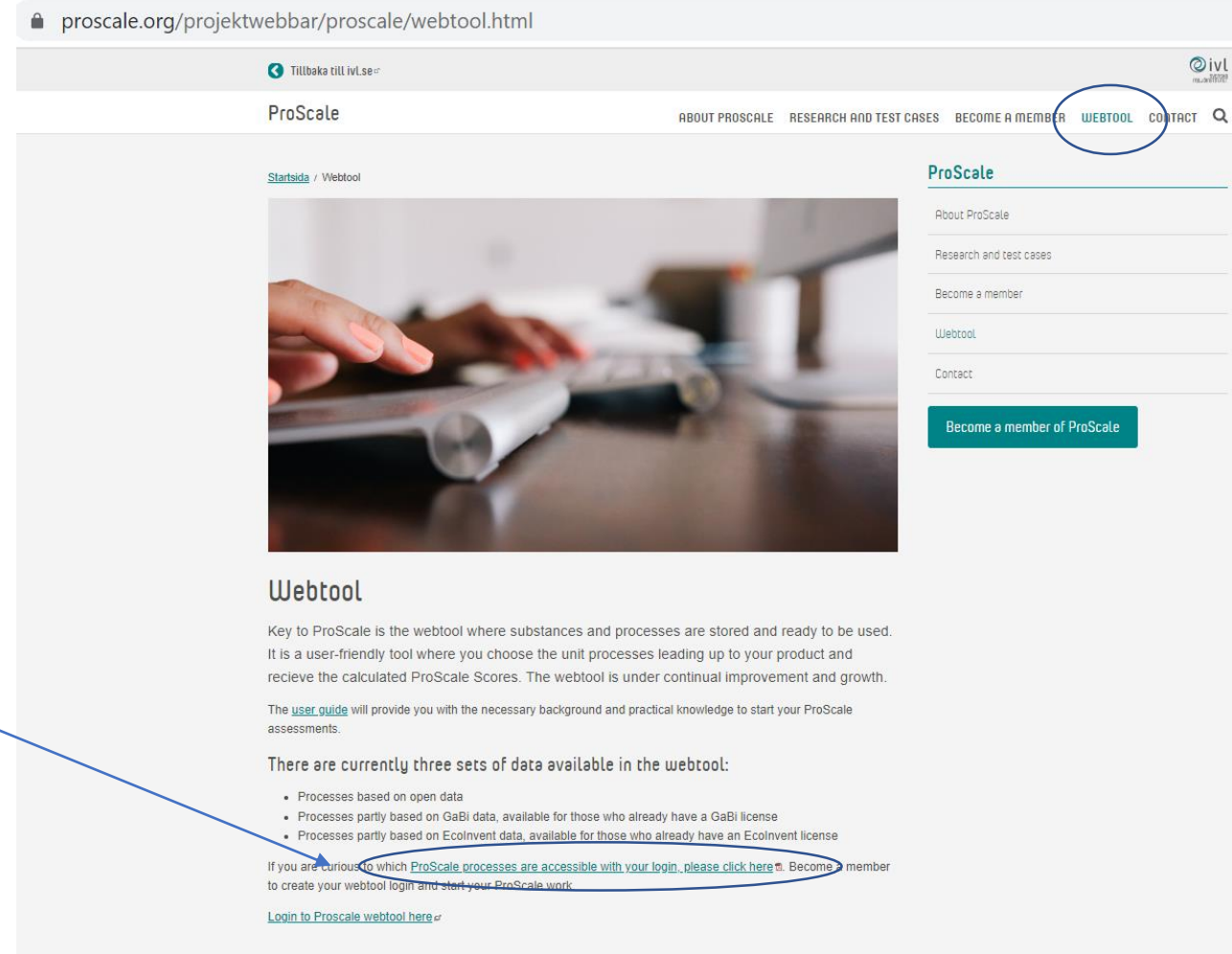
- Processes based on open data
- Processes partly based on GaBi data, available for those who already have a GaBi license
- Processes partly based on Ecolnvent data, available for those who already have an Ecolnvent license

If you are curious to which [ProScale processes are accessible with your login, please click here](#). Become a member to create your webtool login and start your ProScale work.

[Login to Proscale webtool here](#)

# Data repository

- Around 200 unit processes
- List is found here
- Work under way to integrate in regular LCA software




proscale.org/projektwebbar/proscale/webtool.html

Tillbaka till ivl.se

ProScale ABOUT PROSCALE RESEARCH AND TEST CASES BECOME A MEMBER **WEBTOOL** CONTACT

Startsida / Webtool



**ProScale**

- About ProScale
- Research and test cases
- Become a member
- Webtool
- Contact

[Become a member of ProScale](#)

## Webtool

Key to ProScale is the webtool where substances and processes are stored and ready to be used. It is a user-friendly tool where you choose the unit processes leading up to your product and receive the calculated ProScale Scores. The webtool is under continual improvement and growth.

The [user guide](#) will provide you with the necessary background and practical knowledge to start your ProScale assessments.

There are currently three sets of data available in the webtool:

- Processes based on open data
- Processes partly based on GaBi data, available for those who already have a GaBi license
- Processes partly based on Ecolnvent data, available for those who already have an Ecolnvent license

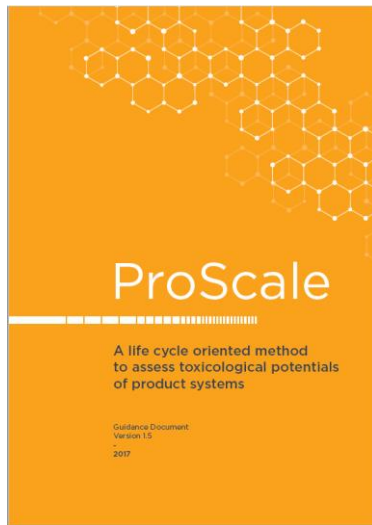
If you are curious to which [ProScale processes are accessible with your login, please click here](#). Become a member to create your webtool login and start your ProScale work.

[Login to Proscale webtool here](#)



# Guidance document

- Link available here



proscale.org/projektwebbar/proscale/webtool.html

Tillbaka till ivl.se

ProScale

ABOUT PROSCALE RESEARCH AND TEST CASES BECOME A MEMBER WEBTOOL CONTACT

Startsida / Webtool

**ProScale**

About ProScale

Research and test cases

Become a member

Webtool

Contact

Become a member of ProScale

## Webtool

Key to ProScale is the webtool where substances and processes are stored and ready to be used. It is a user-friendly tool where you choose the unit processes leading up to your product and receive the calculated ProScale Scores. The webtool is under continual improvement and growth.

The **user guide** will provide you with the necessary background and practical knowledge to start your ProScale assessments.

There are currently three sets of data available in the webtool:

- Processes based on open data
- Processes partly based on GaBi data, available for those who already have a GaBi license
- Processes partly based on Ecolnvent data, available for those who already have an Ecolnvent license

If you are curious to which [ProScale processes are accessible with your login, please click here](#). Become a member to create your webtool login and start your ProScale work.

[Login to Proscale webtool here](#)

# Contact details IVL

---

[tomas.rydberg@ivl.se](mailto:tomas.rydberg@ivl.se)

[amanda.lundberg@ivl.se](mailto:amanda.lundberg@ivl.se)

# Acknowledgment

---

- The European Union (project number 101060546) for financial support.
- The Swedish Research Council for Sustainable Development (FORMAS, grant 2021-00445) for financial support.
- The Swedish Foundation for Strategic Environmental Research (Mistra: project Mistra SafeChem, project number 2018/11) for financial support.

